

Practice Profile 2024

Curriculum Vitae

Mitchel Cantlon

NZRAB Registered Architect
BArch NZCD(Arch) ANZIA

021 647 040

mitch@mcarchitects.co.nz

www.mcarchitects.co.nz

"Mitchel has over 25 years' of industry experience covering a diverse range of sectors from residential through to commercial, education and recreation projects.

He is a passionate and professional team player, with impeccable attention to detail and a proven track record in leading and delivering award winning projects.

Proactive, responsive and an effective communicator, Mitchel brings a composed and pragmatic approach to the resolution of complex issues, with an emphasis on clarity and design focused solutions."

Key Clients & Projects

MCA - January 2022 to present **Pool Complex**

Resident and guest pool complex; service, change, cabanas and hosting pavilions. In association with RBT Design.

Te Arai Links

Various projects including a 265m² underground golf cart garage and a 120m² on course cafe.

The University of Auckland

Various minor capital works projects including interior upgrade and refurbishment to the 12 level O'Rorke student hall.

Murphy Property - Greville Road

3,100m² factory with 220m² office.

Murphy Property - Barrys Point Road

Three level 3,000m² commercial office, 1,000m² basement carpark.

Ateck Steel

2,250m² factory with 340m² two level office.

Kirkbride Road

6,000m² including office, sales, rental and servicing
Design and build review plus concept designs.

WARREN & MAHONEY - 2014 - 2021

Gallagher Group - Hamilton

Campus master-plan and new 20,000m² manufacturing facility.

Air New Zealand - Auckland Airport

Master-planning and new 12,000m² global headquarters.

The University of Auckland - Recreation and Wellness Centre

\$220m multi-level indoor sports and aquatic facility. In association with MJMA Architects Toronto.

Auckland Regional Facilities - Western Springs Redevelopment

\$70m event and international cricket venue.

Precinct Properties - Wynyard Quarter Master-plan

48,000m² commercial office space across five building sites.

Precinct Properties - Mason Bros - Wynyard Quarter

5,500m² office within a 1940's engineering workshop.
6 star Green Star.

Precinct Properties - 12 Madden Street - Wynyard Quarter

8,800m² six level office, two level basement car-park.
5 star Green Star.

JASMAX - 2007 - 2014

Goodman Properties - Bayleys House - Wynyard Quarter

8,800m² Six-level office and retail development, above a four level basement car-park.

Goodman Properties - Fonterra Head Office - Wynyard Quarter

16,500m² Seven level office development, with a single level basement car-park.
5 star Green Star

Auckland Theatre Company - Wynyard Quarter

600 seat theatre connected to ASB North Wharf
In association with BVN and Moller Architects.

AUT University - Sir Paul Reeves Building

20,000m² development within the heart of the city campus

Ministry of Education - Ormiston Senior High School

10,500m² secondary school at Flat Bush.

Ministry of Education - Albany Senior High School

Stand-alone gymnasium as part of the new high school campus.

McConnell Property - Ellerslie Racecourse

Master-planning and building design for a 17,500m² commercial development over four sites.

HDR - London UK - 2004 - 2006

Bechtel National

Three 8,500m² Laboratories in Georgia, Kazakhstan and Uzbekistan.

DubioTech

35,000m² Flagship corporate laboratory in Dubai.

The Pirbright Institute

16,700m² Science and Discovery facility in Surrey.

JOHN ROWE-PARR ARCHITECTS - London UK - 2003 - 2004

Various multi unit housing developments in London

TOWNSEND ARCHITECTS - Auckland -

2000 - 2003

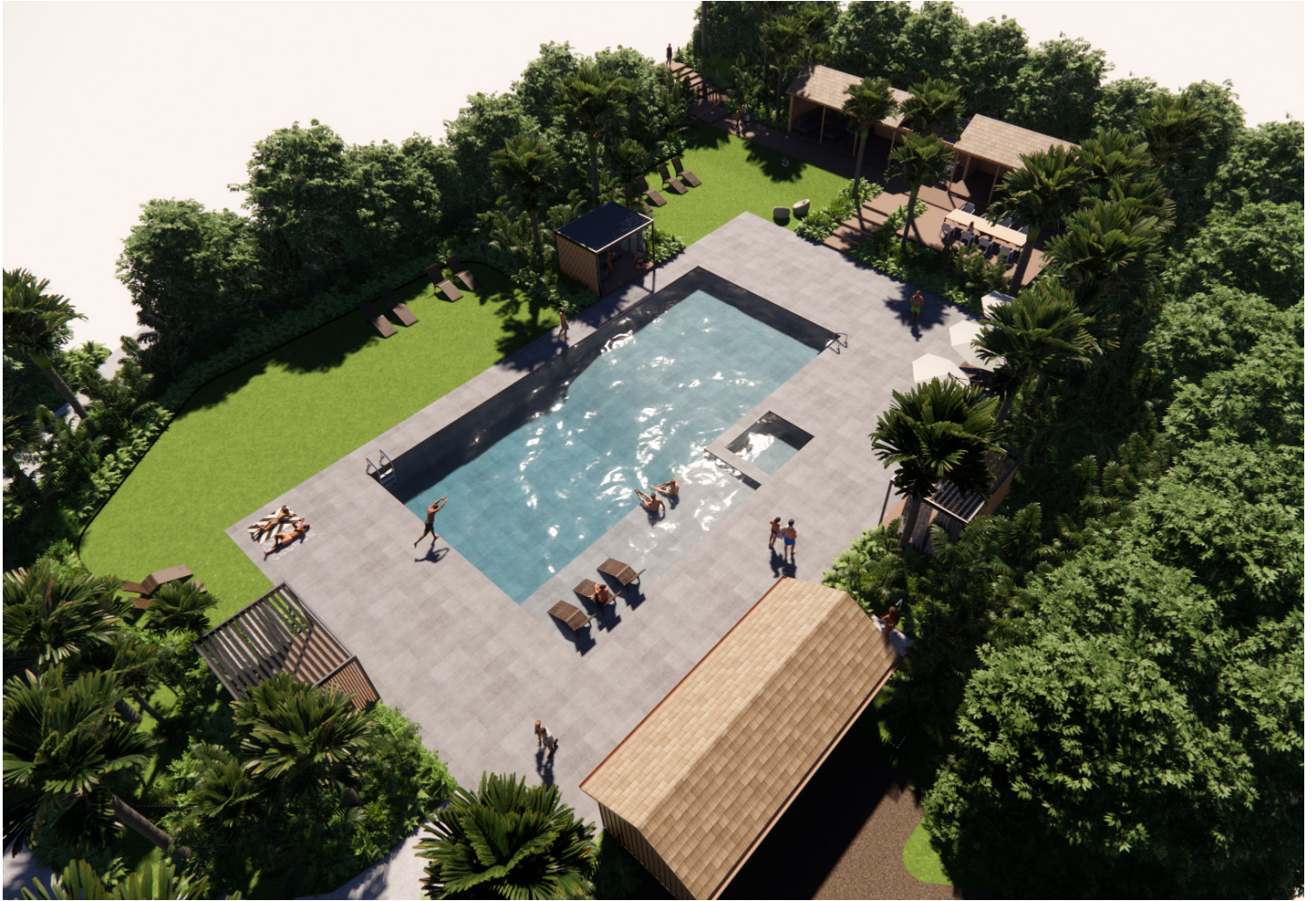
Residential, hospitality and light commercial projects.

1995 - 2000 - Waikato - Bay of Plenty

Various residential projects.

References available on request

Pool Complex





MCA - TAL - Cart Bunker



MCA - TAL - The Halfway House





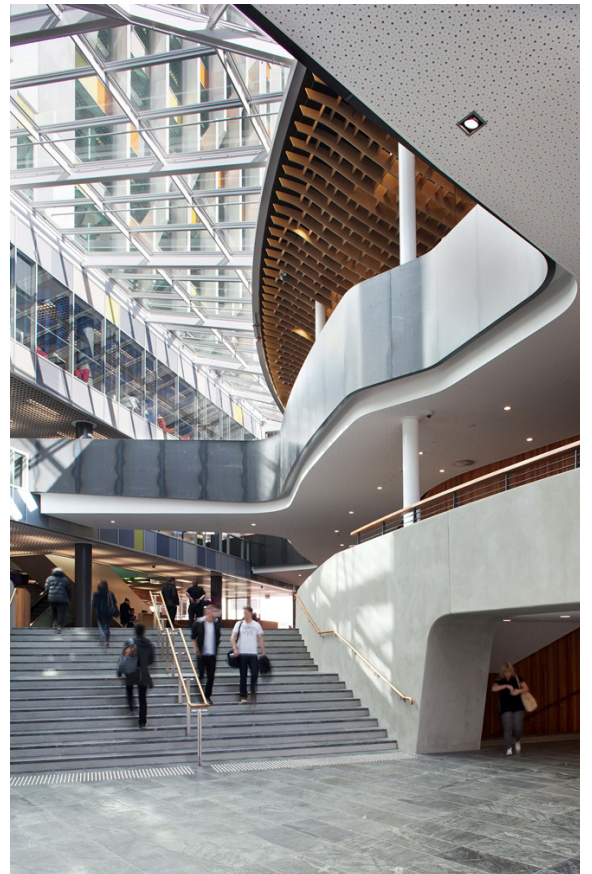


Warren and Mahoney - 12 Madden Street



Warren and Mahoney - UoA - Recreation and Wellness Centre

Warren and Mahoney - Mason Bros



Jasmx - AUT - Sir Paul Reeves Building

Practice Information

2024

Company Details:

Mitchel Cantlon Architects Limited

NZBN: 9429050236466

GST number: 135409367

Trading as: MCA (Mitchel Cantlon Architects)

Company Director:

Mitchel Cantlon

Qualifications and Affiliations:

BArch Bachelor of Architecture

NZCD(Arch) New Zealand Certificate in Architectural Draughting

NZRAB NZ Registered Architects Board - Registered Architect 4313

NZIA NZ Institute of Architects - Individual Member

Insurer: AON

Bank: ASB

Software:

BIM: Autodesk Revit

Rendering: Enscape

Specification: Masterspec

Graphics: Adobe Creative Suite

Administration: Microsoft Office, Xero

Contact:

21 Fifth Avenue,

Mt Albert

Auckland, 1025

studio@mcarchitects.co.nz

www.mcarchitects.co.nz

021 647 040